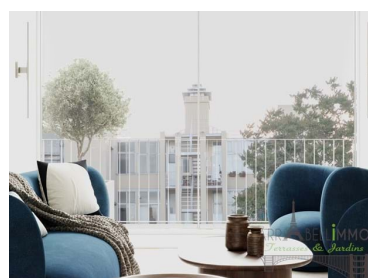
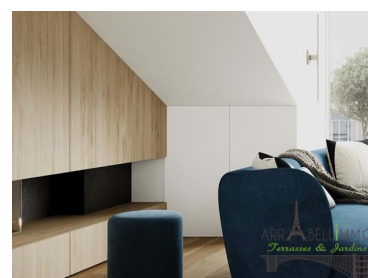
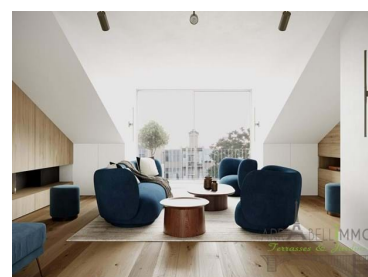
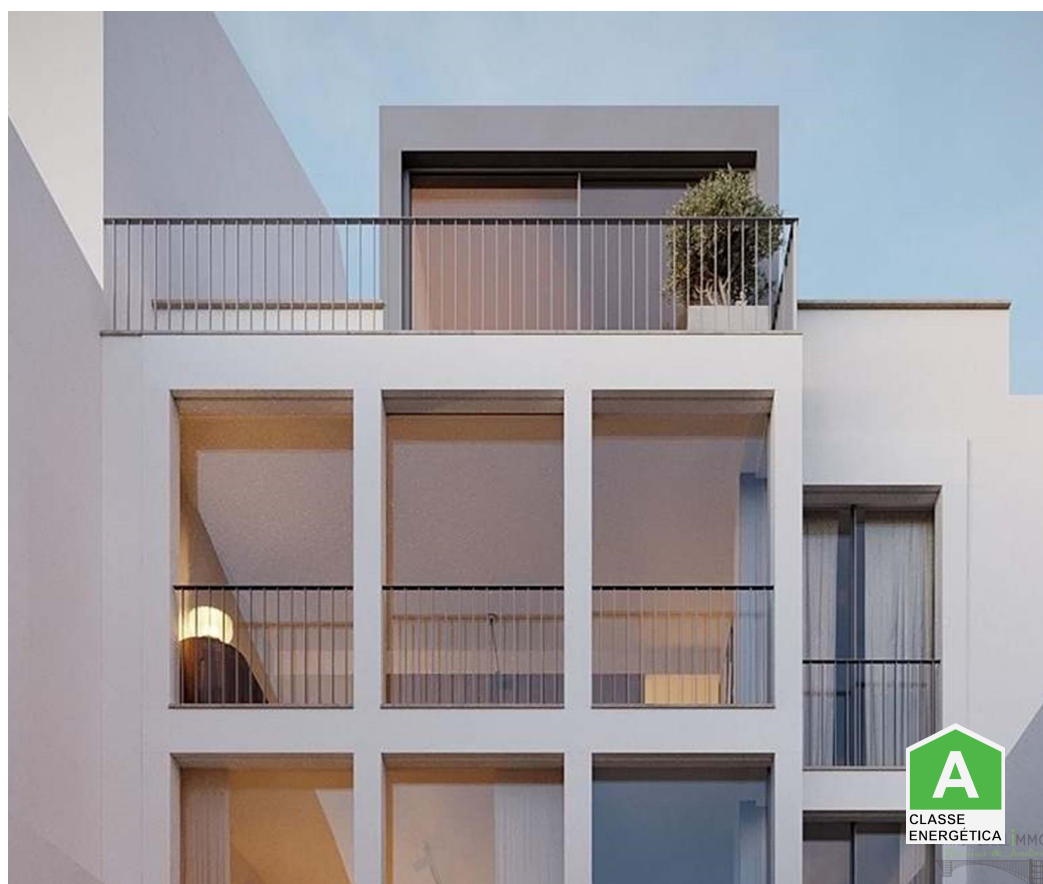




Misericórdia - Apartment



3
Bedrooms
 3
Bathrooms
 165
Area (m²)
 18
Land Area (m²)
 1
Garage

1 800 000 €
(EUR €)

T3 penthouse 165 m2 with terraces 18 m2 and views - parking - Príncipe Real, Lisbon

T3 Penthouse with Terrace and Panoramic Views in Príncipe Real, Lisbon

Magnificent penthouse of 165 m², located in a residential project of three apartments in the heart of the sought-after area of Príncipe Real. This property is distinguished by its elegant terraces offering breathtaking views of the city.

Apartment Details

- Surface area : 165 m²
- Floor: 3rd and 4th
- Terraces: 13 m² on the street side + - 5 m² on the courtyard side



Lise Bringer

French, Portuguese, English and German

+351 937 030 356 ² · +33 6 30 10 73 02

lise@arrabellimmo.com

T +351 215 876 793 ¹ · T +351 962 720 585 ² · E contact@arrabellimmo.com

Rua do Sol a Santa Catarina, N°6 1200-455 Lisboa
AMI 15355

¹ (Call to national fixed network) | ² (Call to national mobile network)



Arrangement:

- Spacious living room of 32.4 m²
- Kitchen and dining room of 26 m²
- A Suite of 28.4 m²
- Two bedrooms of 12.7 m² and 14 m²

Equipment

- Elevator and parking for one car included.
- Electric water heater.
- Fireplace (choice between wood or gas depending on the buyer).
- Daikin reversible air conditioning (hot-cold).
- Integrated vacuum cleaner in all bathrooms.
- Kitchen hood with suction system.
- Bosch appliances.
- Solar panels on the roof for increased energy efficiency.

Availability

The delivery of this penthouse is scheduled for the last quarter of 2025.

Localization

Ideally located in the Príncipe Real district, close to Praça das Flores, the São Bento district and the Palace of the Assembly of the Republic. This residential street is renowned for its charm, green spaces and friendliness. The many public transport links nearby make this location a privileged choice for a pleasant living environment.



Lise Bringer

French, Portuguese, English and German

+351 937 030 356 ² · +33 6 30 10 73 02

lise@arrabellimmo.com

T +351 215 876 793 ¹ · T +351 962 720 585 ² · E contact@arrabellimmo.com

Rua do Sol a Santa Catarina, N°6 1200-455 Lisboa
AMI 15355

¹ (Call to national fixed network) | ² (Call to national mobile network)



Property Features

- Washing machine
- Air conditioning
- Equipped kitchen
- Proximity: Airport, Beach, Shopping, Restaurants, City, Hospital, Pharmacy, Public Transport, Schools, Public Swimming Pools, Playground
- Garage
- Floors: 3
- Lift
- Main drainage
- Energetic certification: A
- Mains water
- Dishwashing machine
- Fitted wardrobes
- Thermoaccumulator
- Terrace
- Built year: 2025
- Views: City view, Garden view
- Double glazing
- Central location
- Solar orientation: East, West



Lise Bringer

French, Portuguese, English and German

+351 937 030 356 ² · +33 6 30 10 73 02

lise@arrabellimmo.com

T +351 215 876 793 ¹ · T +351 962 720 585 ² · E contact@arrabellimmo.com

**Rua do Sol a Santa Catarina, N°6 1200-455 Lisboa
AMI 15355**

¹ (Call to national fixed network) | ² (Call to national mobile network)